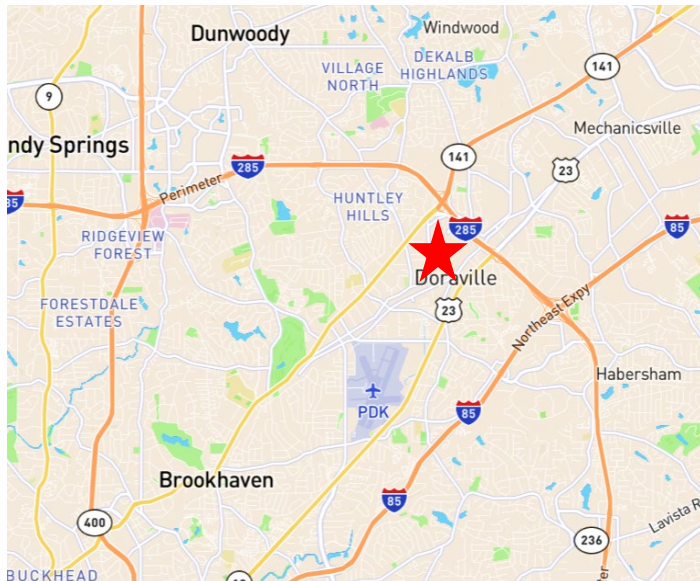


28,550 SF - 145,000 SF FOR SUBLEASE



2451 Industry Ave

Doraville, GA 30360



New Class A Space Available

- Single Floor – 28,550 RSF
- Full building: 145,000 SF
- Floors: 5
- Partial and full building sublease opportunities
- Ownership: Angelo, Gordon & Co.
- Lease Expiration: 1/31/34
- Rate: Negotiable
- Fitness center, conference center & Grab-n-Go mart on-site
- Located near I-285 and Peachtree Industrial Blvd.

Additional information can be found on the [sublease website](#)

Chris Wagner
678 525 5002

Chris.Wagner@am.jll.com

Caroline McKinley
404 702 6338

Caroline.Mckinley@am.jll.com

1st Floor: 28,550 RSF



2nd Floor: 28,550 RSF



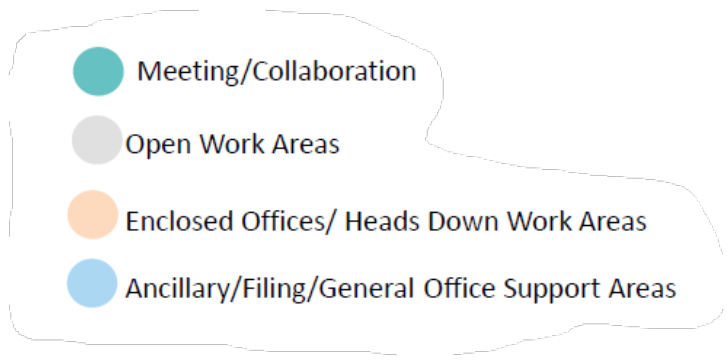
3rd Floor: 28,550 RSF



4th Floor: 28,550 RSF



5th Floor: 28,550 RSF



Additional information can be found on the [sublease website](#)

Chris Wagner

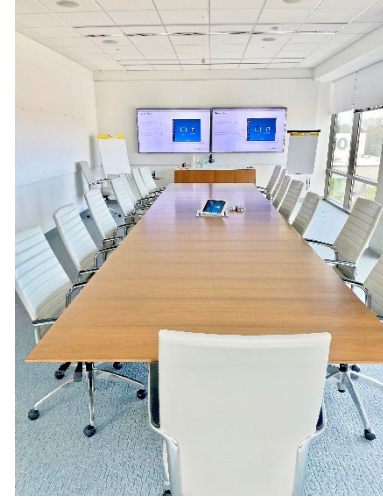
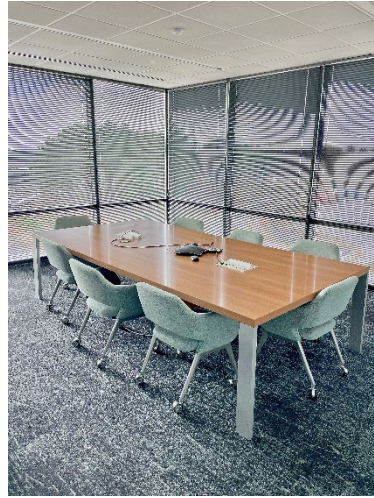
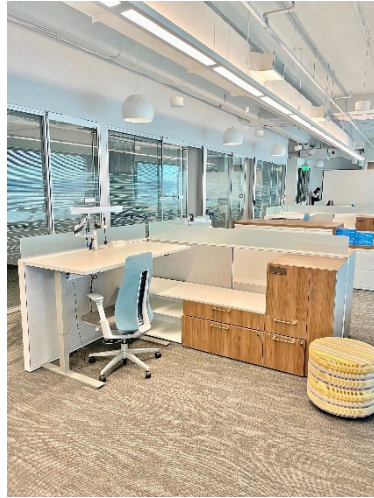
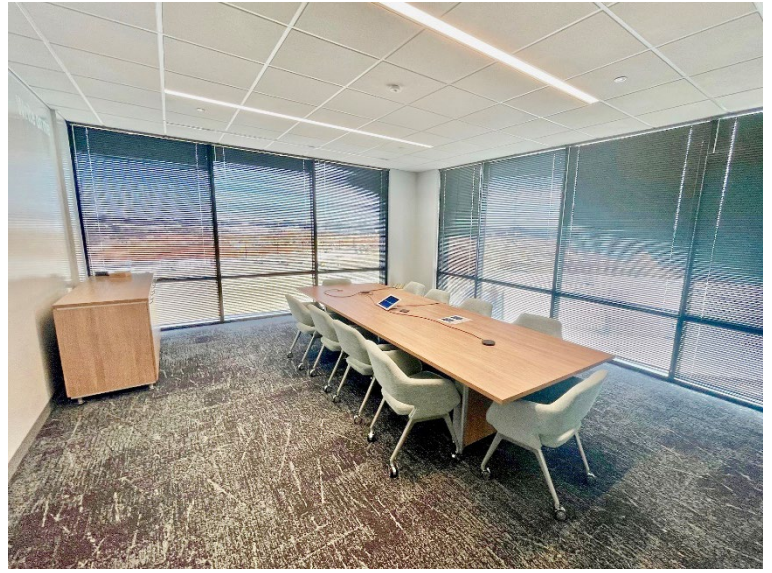
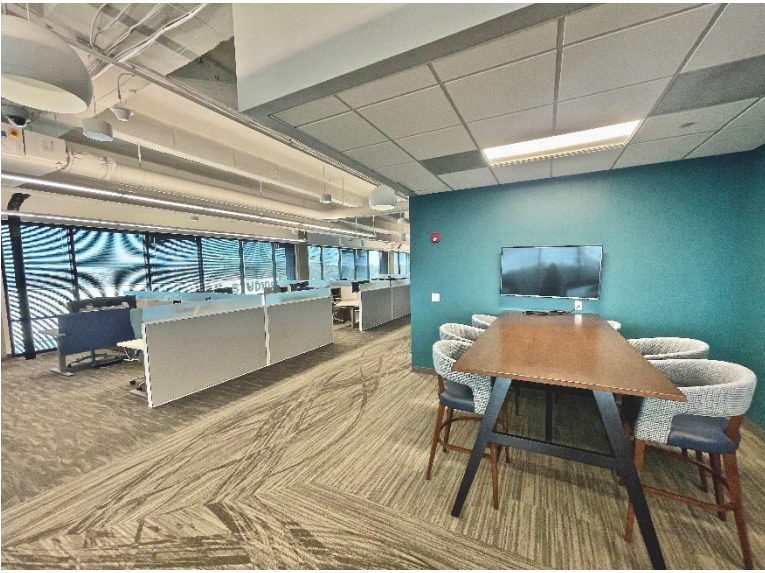
678 525 5002

Chris.Wagner@am.jll.com

Caroline McKinley

404 702 6338

Caroline.Mckinley@am.jll.com



Additional information can be found on the [sublease website](#)

Chris Wagner
678 525 5002

Chris.Wagner@am.jll.com

Caroline McKinley
404 702 6338

Caroline.Mckinley@am.jll.com

Although information contained herein has been obtained from sources deemed reliable, neither JLL nor any of its clients makes any guarantees or representations, express or implied, as to the completeness or accuracy of such information. Any projections, opinions, assumptions or estimates used are for example only. Neither JLL nor any of its clients accepts any liability for loss resulting from reliance on such information. There may be material differences between projected results and actual results. Any property offered for sale or lease may be withdrawn without notice. If the recipient of this information has signed a confidentiality agreement regarding this matter, this information is subject to the terms of that agreement. Copyright © 2020 Jones Lang LaSalle IP, Inc. All rights reserved.

